

CERTIFICATE OF LOCATION OF GOVERNMENT CORNER

EAST QUARTER Corner of Section 35, Township 108, Range 42, 5TH P.M.

STATE OF MINNESOTA, County of MURRAY

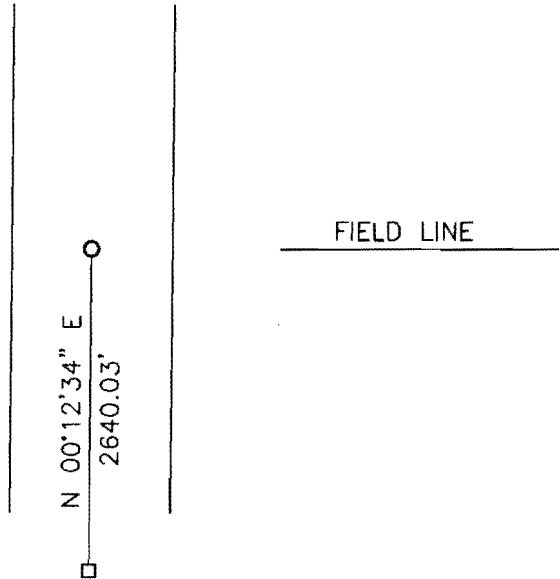
At the corner location shown on the sketch:

On _____ found a _____
DATE

left monument as found, lowered monument, removed monument (explain)

On 05-14-2007 placed a 1" IRON PIPE WITH SEAL #43844
DATE

SKETCH OF REFERENCE TIES

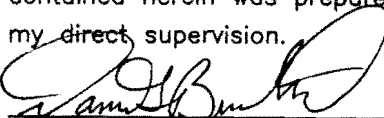


Minnesota State Plane Coordinate
System Murray County Datum
NAD83 (1996)

N: 197924.862
E: 479819.416

Statement of evidence relative to this corner location is on back of page.

I hereby certify that this document and the data contained herein was prepared by me or under my direct supervision.


SIGNATURE Feb. 20, 2008
DATE

Registration No. 43844

Land Surveyor, Professional Engineer
 County Surveyor, County Engineer

OFFICE OF THE COUNTY RECORDER

County of _____

I hereby certify that this document was filed in the Co. Recorders office at _____ .M on the _____ day of _____ A.D. 20 _____

County Recorder _____

By _____, Deputy

DOCUMENT NO. _____

Statement of Evidence

In 1861, L. G. W. Fletcher did the original subdivision of the township.

On August 25, 1925, a government stake was found at the corner. A blue blasted stone and gallon jug were placed at the corner, the stone was 8"x10"x30" and painted on both ends. This information was provided by the Murray County Highway Department.

On May 14, 2007, Bueltel-Moseng Land Surveying requested permission to dig at the corner with a backhoe. The Murray County Engineers Office refused to let us dig because they have placed a tile down the center of the road to control flooding. We dug by hand and found a 6" spike and wood pieces but we did not find the stone. We believe that it was destroyed when the tile was being placed. We set a 1" iron pipe with seal in the center of the road and 2640' north of the southeast corner. It fell in line with a field line to the east and is midway between the southeast corner and the northeast corner.